

YEAR 2016

CORE STATION 3004

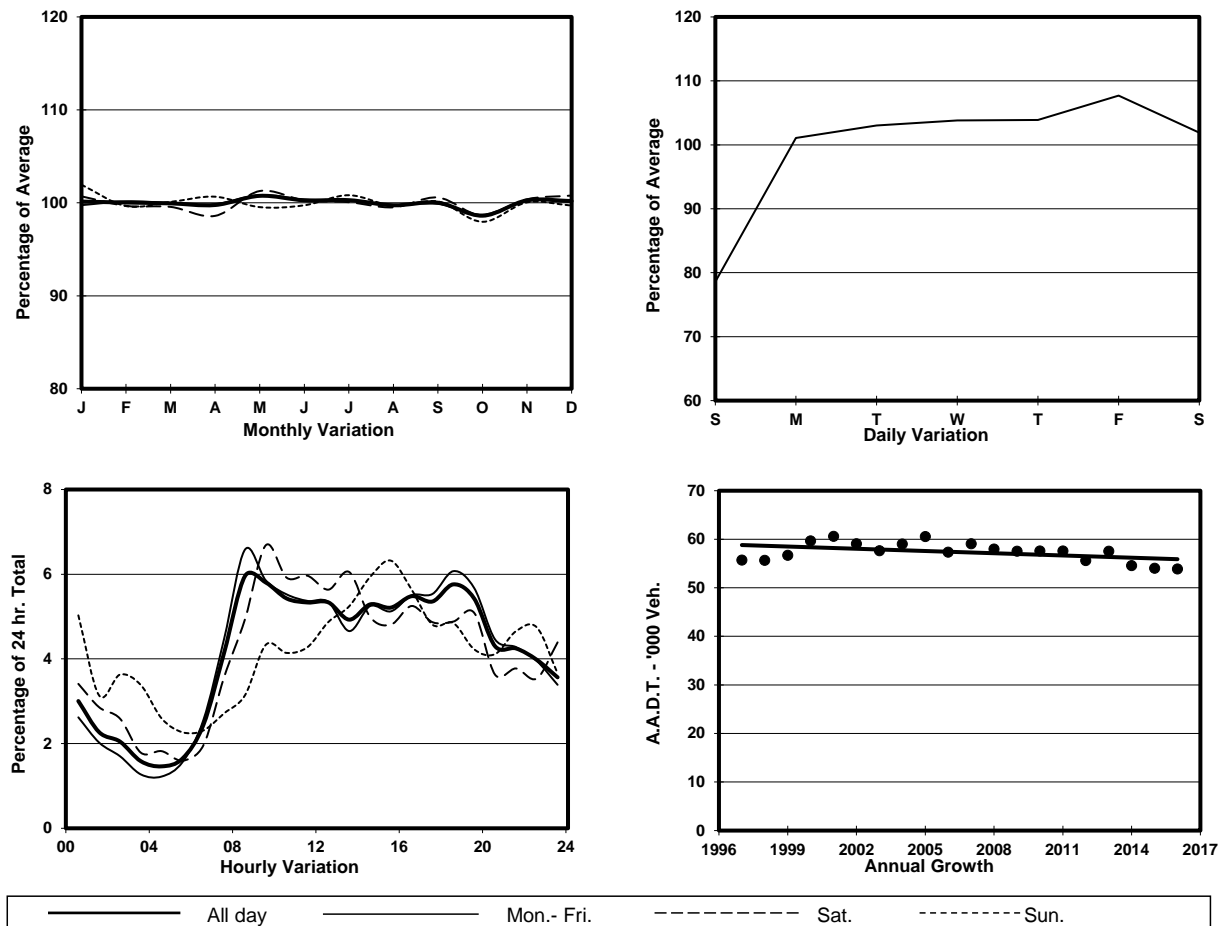
ROAD NETWORK MAJOR

ROAD TYPE URBAN TRUNK ROAD

LINK KAI TAK TUNNEL (from SUNG WONG TOI RD to KAI CHEUNG RD)



1. TRAFFIC FLOW VARIATION AND GROWTH



2. TRAFFIC CHARACTERISTICS (BY DIRECTION)

Parameter	All - Day	Mon. - Fri.	Sat.	Sun.
EAST BOUND				
A.A.D.T.	25340	26590	25950	20550
R 12 / 24 - %	64.4	66.3	60.9	56.1
R 16 / 24 - %	82.5	84.3	78.6	75.5
AM Peak Hour	0900-1000	0900-1000	0900-1000	0900-1000
One-way flow at AM peak hour	1500	1710	1290	820
T - % (AM)	-	15.3	-	-
PM Peak Hour	1600-1700	1600-1700	1600-1700	1600-1700
One-way flow at PM peak hour	1490	1600	1430	1130
T - % (PM)	-	11.7	-	-
Prop.of commercial vehicles - 16 hr.	-	11.3	-	-
WEST BOUND				
A.A.D.T.	28530	30040	29550	22250
R 12 / 24 - %	63.7	64.4	65.9	56.4
R 16 / 24 - %	81.5	83.1	80.5	72.7
AM Peak Hour	0800-0900	0800-0900	0900-1000	0900-1000
One-way flow at AM peak hour	1800	2090	2420	1030
T - % (AM)	-	11.8	-	-
PM Peak Hour	1800-1900	1800-1900	1600-1700	1600-1700
One-way flow at PM peak hour	1690	1910	1490	1280
T - % (PM)	-	8.2	-	-
Prop.of commercial vehicles - 16 hr.	-	10	-	-

3. OTHER INFORMATION AND COMMENT

4. Vehicle classification and occupancy - Monday to Friday

Time		Class of vehicle									
		Motor	Private	Taxi	Private	PLB	Goods veh.		Non	Fr. Bus	
		Cycle	Car		LB		Light	M & H	Fr. Bus	SD	DD
0700-0800	Pro	7.4	29.7	28.4	1.3	0.0	16.3	10.2	3.3	0.1	3.4
	Ocp	1.1	1.3	1.9	3.6	0.0	1.3	1.1	7.5	44.5	39.3
0800-0900	Pro	6.2	43.7	22.4	1.0	0.0	15.8	6.0	2.1	0.0	2.8
	Ocp	1.0	1.3	2.0	4.2	0.0	1.5	1.1	15.5	0.0	53.2
0900-1000	Pro	4.8	35.2	29.1	0.3	0.0	18.2	7.7	1.9	0.0	2.9
	Ocp	1.1	1.3	1.9	3.3	0.0	1.4	1.2	12.8	0.0	30.2
1000-1100	Pro	4.8	28.6	27.5	0.5	0.0	24.4	10.1	1.2	0.0	3.0
	Ocp	1.1	1.3	1.9	1.4	0.0	1.6	1.2	5.3	0.0	22.7
1100-1200	Pro	2.7	35.8	23.4	0.3	0.0	26.4	7.8	1.1	0.0	2.5
	Ocp	1.0	1.3	2.0	2.3	0.0	1.4	1.2	12.1	0.0	27.3
1200-1300	Pro	3.7	32.4	26.7	1.0	0.0	25.4	6.3	2.2	0.0	2.4
	Ocp	1.0	1.4	1.9	4.1	0.0	1.5	1.3	10.7	0.0	26.9
1300-1400	Pro	2.8	33.4	24.8	1.0	0.0	25.2	8.6	2.1	0.0	2.2
	Ocp	1.0	1.4	2.0	2.0	0.0	1.6	1.3	11.6	0.0	34.7
1400-1500	Pro	3.8	32.1	22.5	0.8	0.0	29.6	7.3	1.8	0.0	2.2
	Ocp	1.1	1.5	2.0	3.9	0.0	1.5	1.1	9.1	0.0	31.6
1500-1600	Pro	4.2	34.7	26.3	1.4	0.0	21.3	7.3	2.3	0.0	2.3
	Ocp	1.0	1.5	1.9	4.4	0.0	1.5	1.1	22.6	0.0	30.9
1600-1700	Pro	5.2	41.2	19.9	0.7	0.0	21.4	6.6	1.8	0.0	3.2
	Ocp	1.1	1.4	1.9	4.7	0.0	1.4	1.1	11.4	0.0	28.6
1700-1800	Pro	9.1	40.7	22.7	0.4	0.0	17.2	3.3	3.4	0.0	3.1
	Ocp	1.1	1.4	1.9	1.7	0.0	1.3	1.2	15.6	0.0	43.4
1800-1900	Pro	8.8	50.7	18.9	0.6	0.0	13.4	2.5	2.6	0.0	2.5
	Ocp	1.1	1.3	2.3	2.0	0.0	1.4	1.2	18.2	0.0	61.5
1900-2000	Pro	4.2	56.7	23.5	0.2	0.0	7.6	1.9	2.8	0.0	3.0
	Ocp	1.2	1.4	2.2	2.0	0.0	1.6	1.3	8.6	0.0	41.1
2000-2100	Pro	3.5	47.8	33.2	0.0	0.0	9.0	1.0	1.8	0.0	3.7
	Ocp	1.1	1.4	1.9	0.0	0.0	1.4	1.0	3.8	0.0	25.4
2100-2200	Pro	4.0	42.3	37.1	0.0	0.0	9.4	1.7	1.9	0.1	3.6
	Ocp	1.2	1.5	2.1	0.0	0.0	1.4	1.3	2.8	1.0	28.8
2200-2300	Pro	4.8	44.3	38.0	0.0	0.0	7.3	1.6	0.9	0.0	3.0
	Ocp	1.1	1.4	2.2	0.0	0.0	1.4	1.0	3.9	0.0	30.5
16 hours	Pro	5.0	39.5	26.1	0.6	0.0	18.1	5.7	2.1	0.1	2.8
	Ocp	1.1	1.4	2.0	3.4	0.0	1.5	1.2	11.8	30.0	35.2

Legend

Pro. Proportion of vehicles in % (Sum may not add up to 100% due to figure rounding)*

Ocp. Average occupancy of vehicles including both driver and passengers*

M&H Medium and Heavy

* All traffic data are collected from combined bounds except for one way traffic